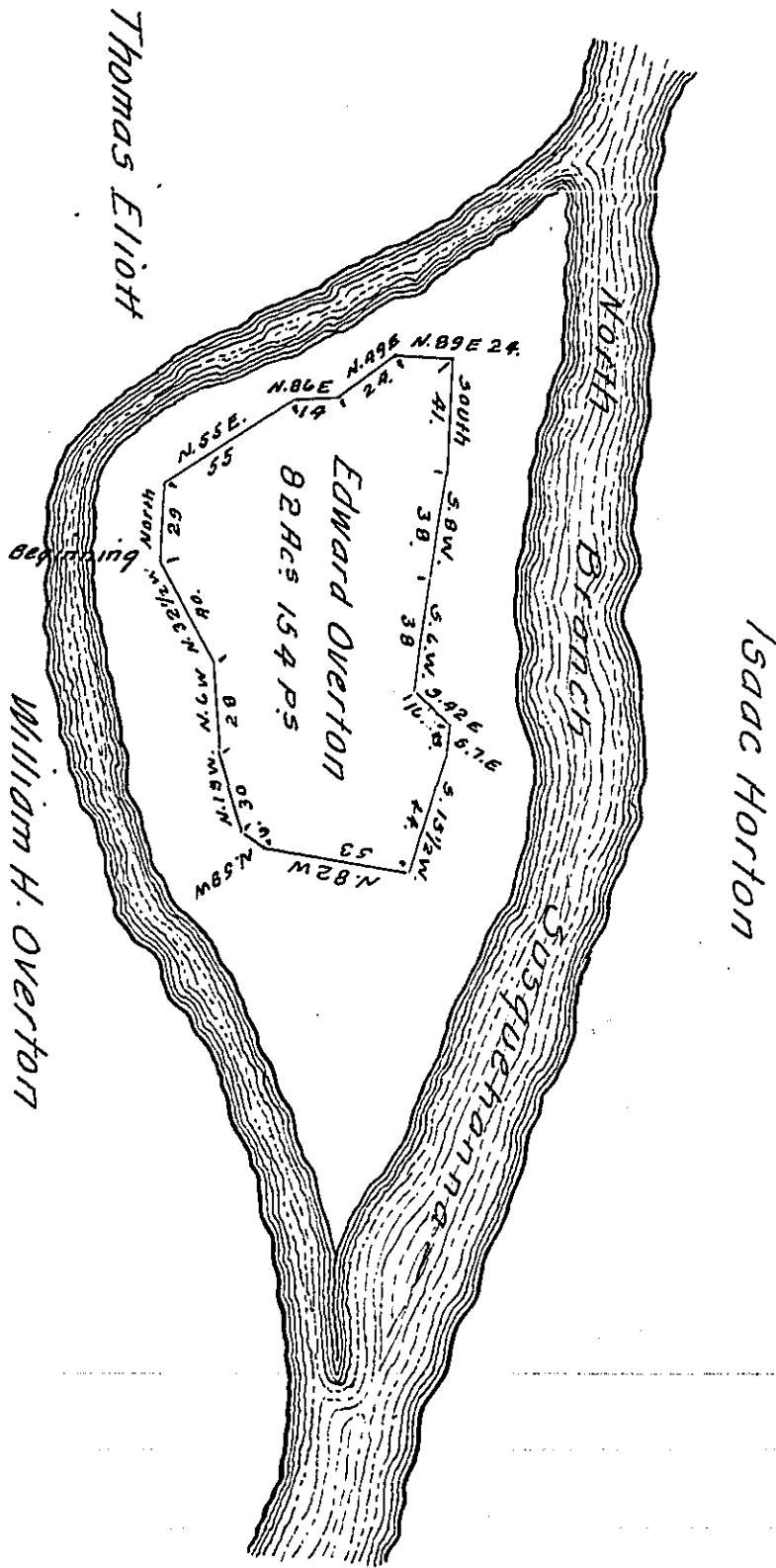


- Courses*
- N. 55 E 55
 - N. 86 E 14
 - N. 49 E 24
 - N. 89 E 24
 - SOUTH 41
 - S. 8 W 38
 - S. 6 W 38
 - S. 42 E 16
 - S. 7 E 8
 - S. 15 1/2 W 44
 - N. 82 W 53
 - N. 58 W 6
 - N. 19 W 30
 - N. 6 W 28
 - N. 32 1/2 W 40
 - North 29



*Draft of an Island in the North Branch of the Susquehanna River in the township of Ulster. Bradford County called Overton's Island containing Eighty two Acres and one hundred and fifty four perches strict measure. Surveyed to Edward Overton April 6th 1827 on a Warrant dated the 6th day of October 1826**

*To Gabriel Hiester Esq^r. Eliot Mason D. S.
Surveyor General*

** say 1826.*

IN TESTIMONY that the above is a copy of the original remaining on file in the Department of Internal Affairs of Pennsylvania, made conformably to an Act of Assembly approved the 16th day of February, 1833, I have hereunto set my Hand and caused the Seal of said Department to be affixed at Harrisburg, this tenth day of September 1907.

Henry Houck
Secretary of Internal Affairs.